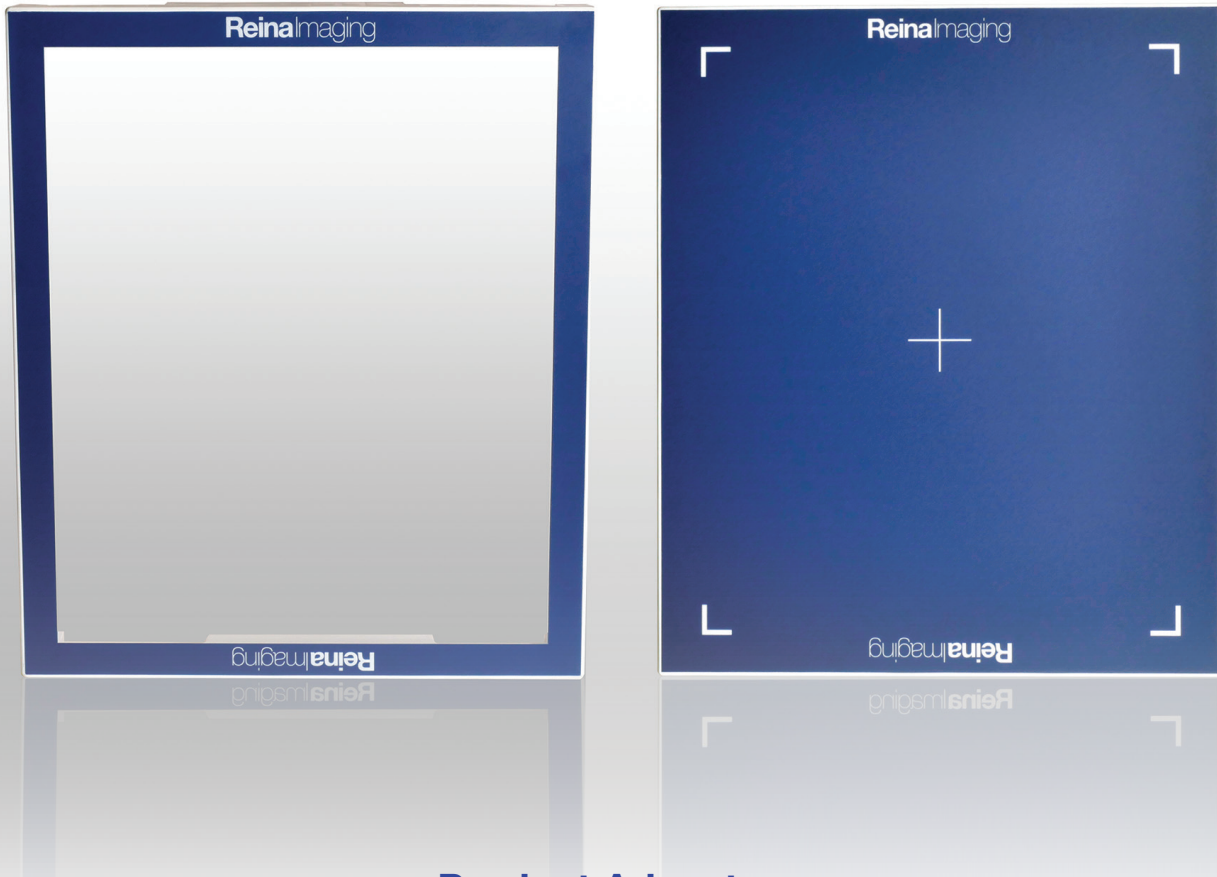


WEIGHT DISTRIBUTION CAPS

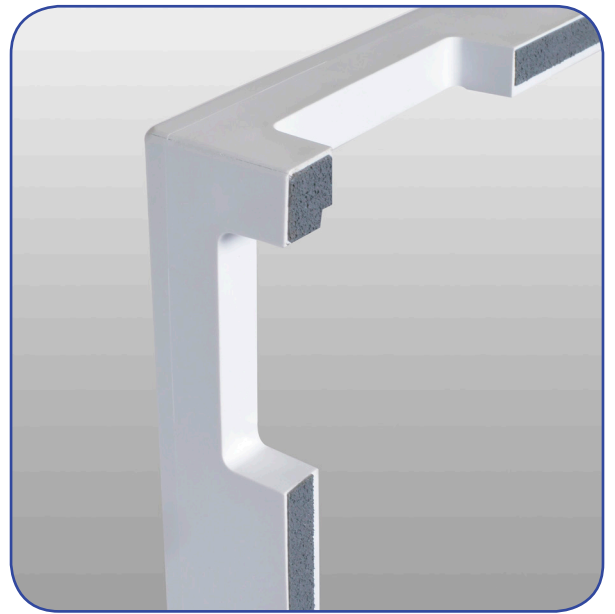
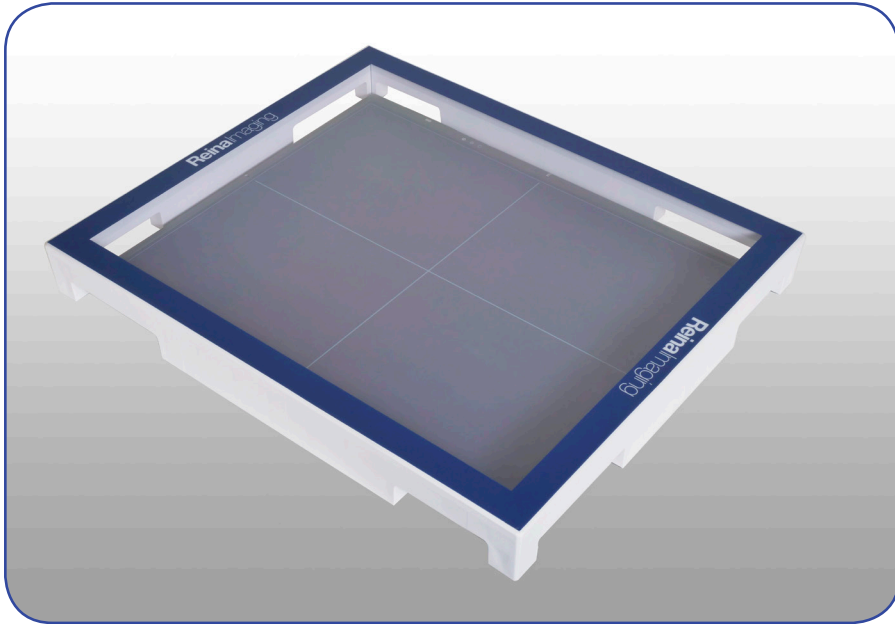
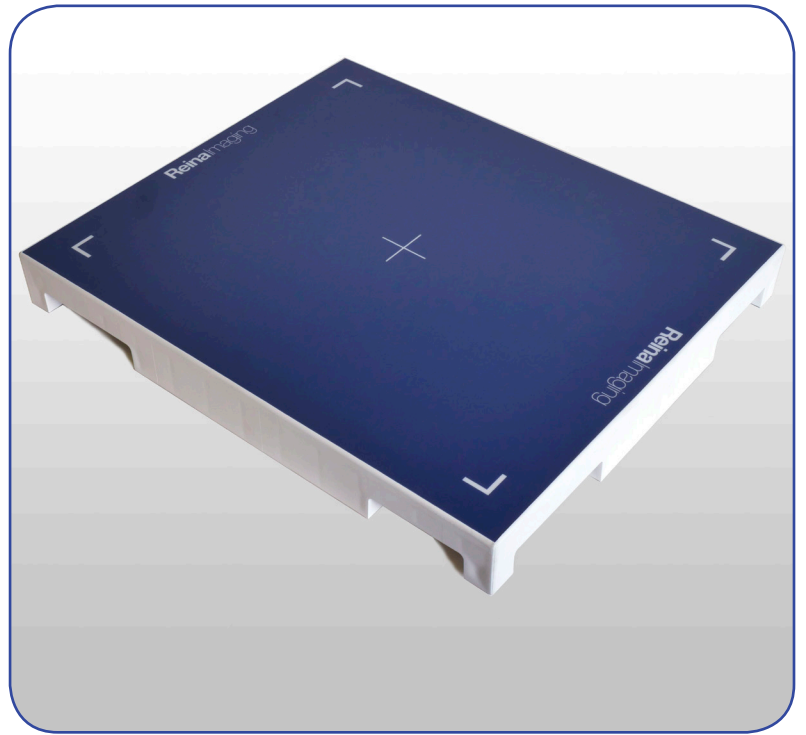
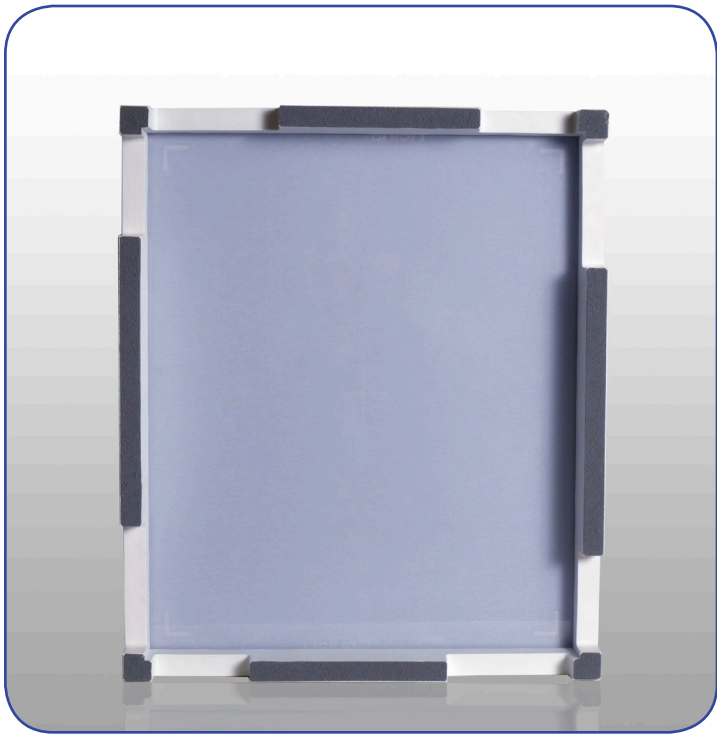


Product Advantages

- Lightweight (7 lb.)
- Small footprint
- Slip-resistant
- Cutout for tether

- Durable
- Rated up to 750 lb.
- Available with clear or opaque top

Standing feet weight bearing exams require the patient to stand on the imaging receptor. Protection to expensive DR panels is paramount. Reina Imaging's new [14x17 Weight Distribution Cap](#) is now lighter, less money at yet maintains the same performance. It is rated up to 750 lb. and now is available with a clear top too.



Technical Data

Outside Dimensions

50.8 x 43.18 x 5.7 cm

Weight Capacity

340 kg (750 lb.)