

ACIST HDi[®]

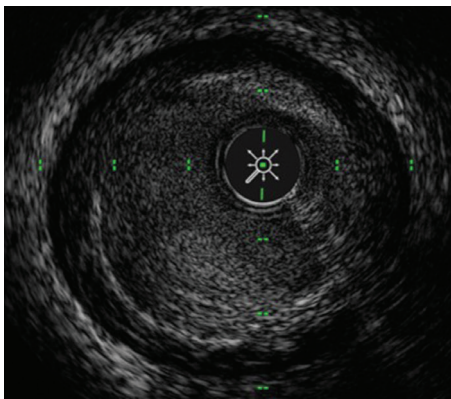
High-definition IVUS System

Enables optimized visualization to inform, illuminate and improve coronary and peripheral intervention strategy

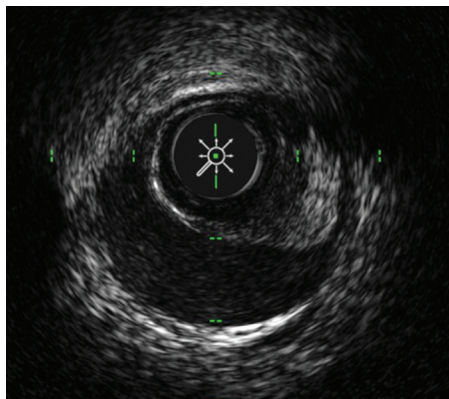


Product Benefits

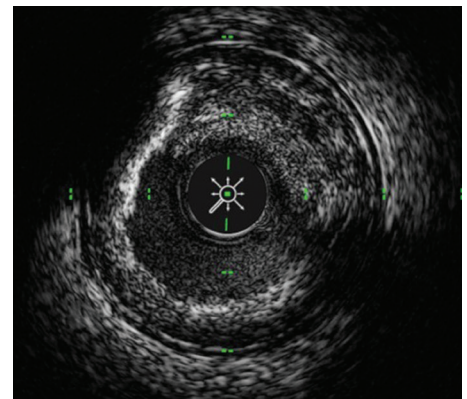
- HDi with **enhanced imaging modes** (LumenView™, SilkView™, ClassicView™) provides a **better defined** IVUS image for preprocedural planning and post procedural assessment¹
- **Improved deliverability² and optimized imaging¹** with the offset distal tip and unique variable flexibility (VariFlex™) imaging window of the Kodama[®] HD IVUS Catheter
- **Interactive** compact console with touch screen for **rapid analysis** and **small footprint** for easy cath lab integration
- **NEW** Now indicated for both coronary and peripheral vasculature procedures



Thrombus



False Lumen



Dissection

ACIST **Kodama**[®]

Frequency: 40/60 MHz

Maximum pullback speed: 10 mm/s

Monorail length: 2 cm (20 mm)

Compatible with
0.014-inch (0.36 mm)
guidewire

Compatible
with 6 Fr guiding
catheter

Transducer

Radiopaque marker
located 8 mm from
distal tip

Crossing profile
<= 3.4 Fr

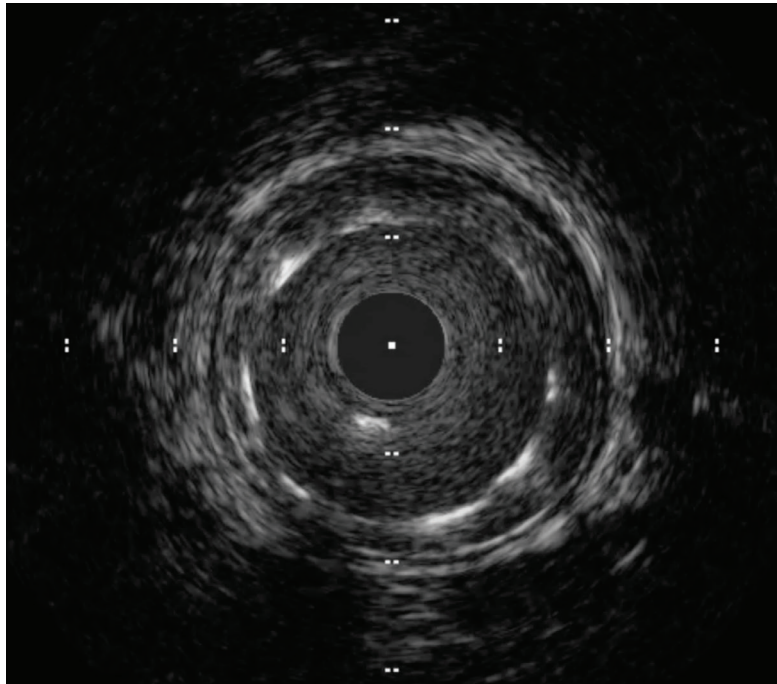
Tip entry profile
<= 1.7 F

Telescopic length: 12 cm

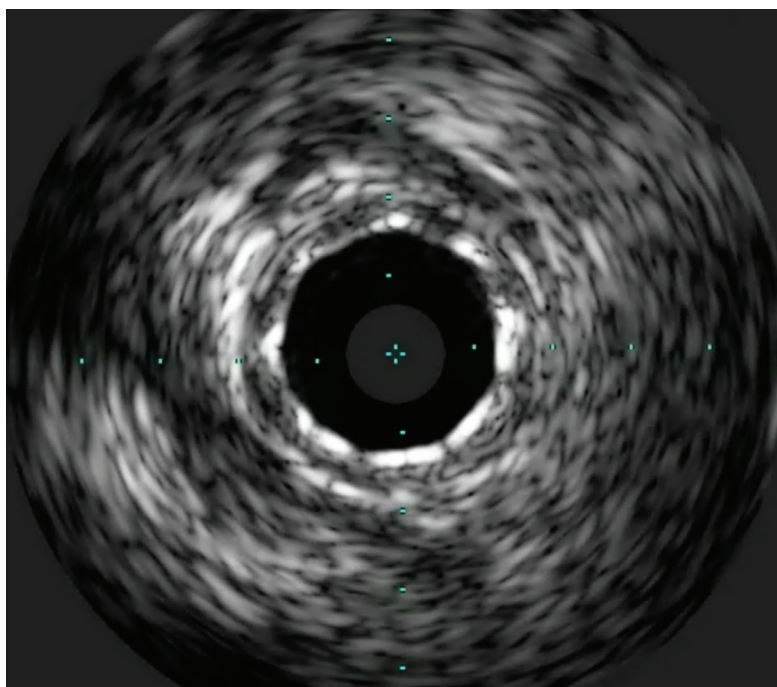
Pullback length: 12 cm

Usable length: 141 cm

See the Difference



ACIST HDi 60 MHz



Competing IVUS 20 MHz

ACIST Medical Systems, Inc.
7905 Fuller Road
Eden Prairie, MN 55344
Étas-Unis
Tel: +1 88 86 70 77 01
customer.support@acist.com

ACIST Europe
Argonstraat 3
6422 PH Heerlen
The Netherlands
Tel: +31 45 750 700
acistin@bracco.com

acist.com

ACIST HDi[®] and Kodama[®] are trademarks of ACIST Medical Systems, Inc. ACIST Medical Systems, Inc. reserves the right to modify the specifications and features described herein or discontinue manufacture of the products described at any time without prior notice or obligation. Please contact your authorized ACIST representative for the most current information.

© 2020 ACIST Medical Systems, Inc. All Rights Reserved. P/N:30-100067_EU 03/20 Rev 1